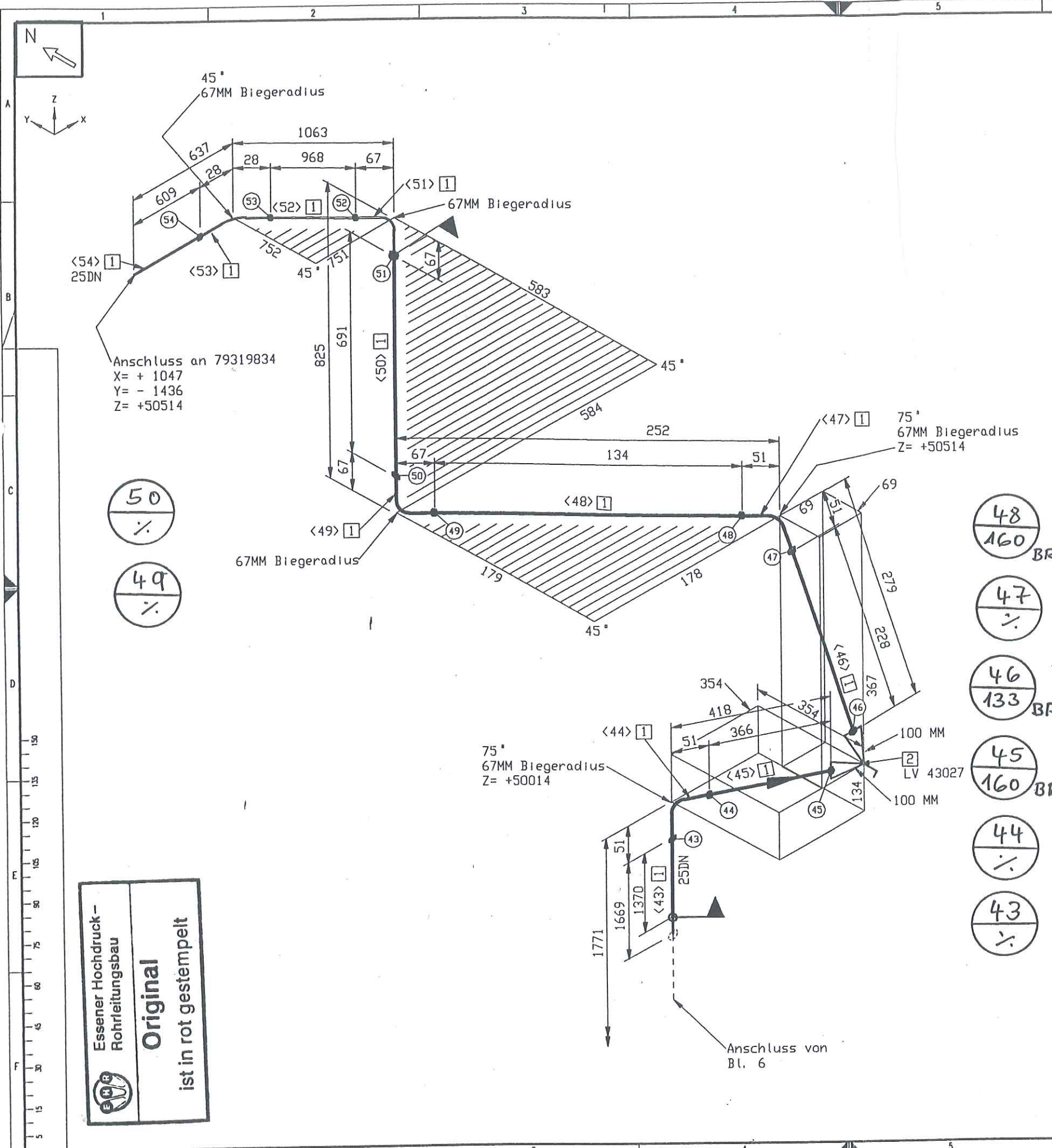


Originale zur
weiteren Bearbei-
tung nach Kosice
unter unsere
Kom.-Nr. C 13035

07. 10. 05

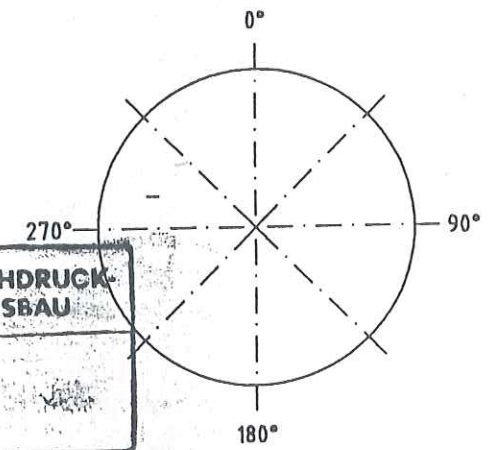
Don.



MATERIAL KONTR.		
CECK OF MAT.		
SCHWEISSEN		
WELDING		
MECHAN. FERTIGST.		
MECHAN. COMPL.		
DRUCKPROBE		
PRESSURE TEST		
EHR-PROJ.-NO.:	C-13005	
	ESSENER HOCHDRUCK- ROHRLEITUNGSBAU GMBH	Air Liquide AGS GmbH

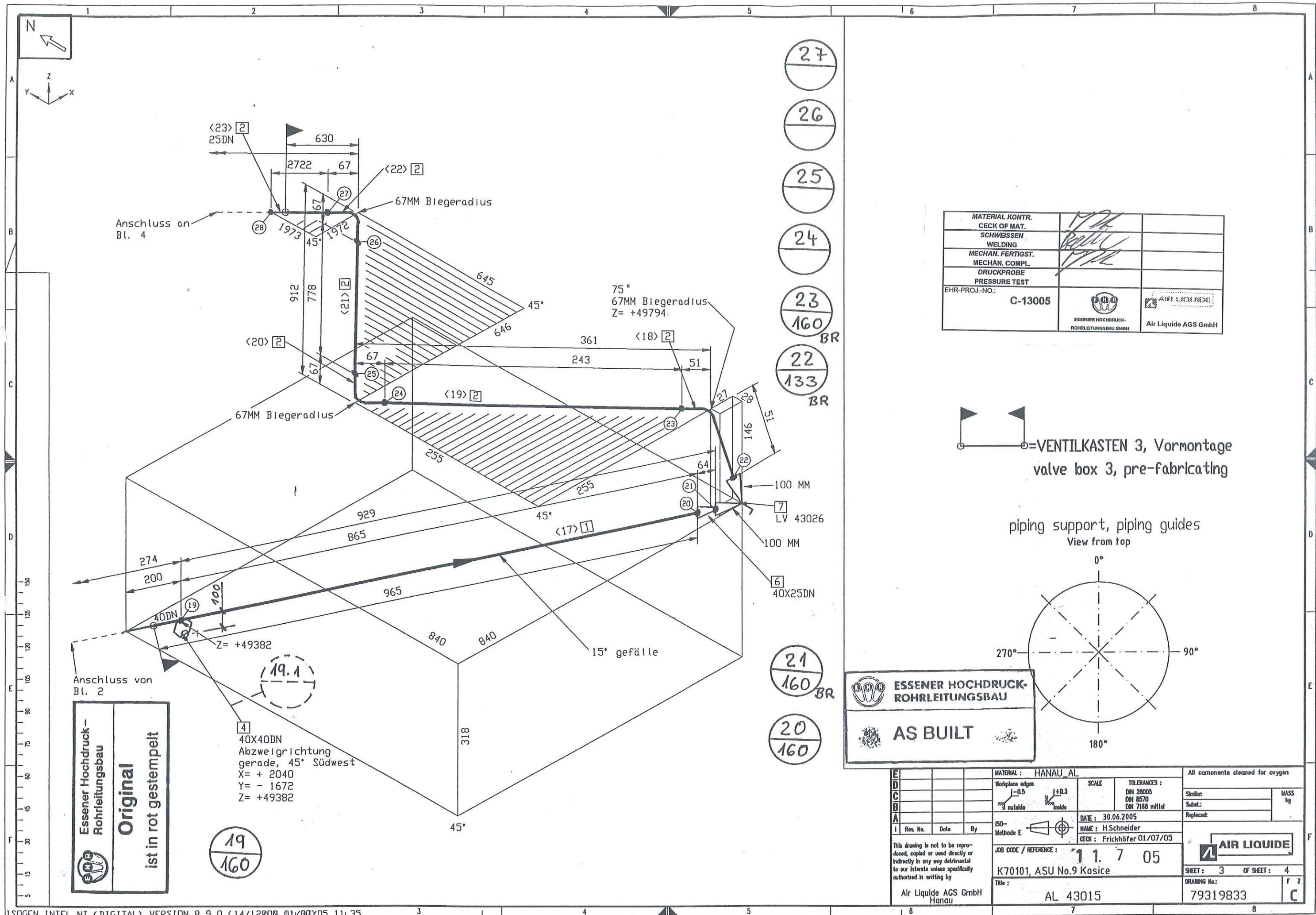
=VENTILKASTEN 3, Vormontage
 valve box 3, pre-fabricating

piping support, piping guides
 View from top



MATERIAL: HANAU AL				SCALE		TOLERANCES:		All components cleaned for oxygen	
Workpiece edges				1-0.3		DIN 20005		Similar:	MASS
2 outside				1/2 inside		DIN 8570		Subst:	kg
ISO-Methode E				DATE: 30.06.2005		NAME: H.Schneider		Replaced:	
JOB CODE / REFERENCE:				CHECK: Frickhöfer 01/07/05		SHEET: 7		OF SHEET: 7	
K70101, ASU No.9 Kosice				Title:		DRAWING No:		F Z	
Air Liquide AGS GmbH Hanau				NL 40016		79319832		C	

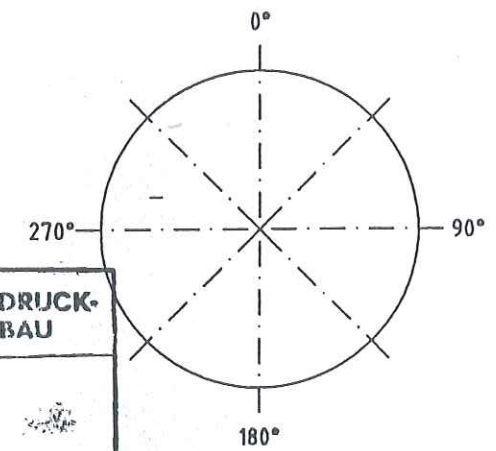
Essener Hochdruck -
 Rohrleitungsbau
Original
 ist in rot gestempelt



MATERIAL KONTR.		
CHECK OF MAT.		
SCHWEISSEN		
WELDING		
MECHAN. FERTIGST.		
MECHAN. COMPL.		
DRUCKPROBE		
PRESSURE TEST		
EHR-PROJ.-NO.:	C-13005	
	ESSENER HOCHDRUCK-ROHRLEITUNGSBAU GMBH	Air Liquide AGS GmbH


= VENTILKASTEN 3, Vormontage
valve box 3, pre-fabricating

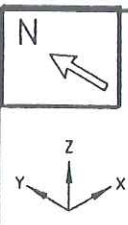
piping support, piping guides
View from top



ESSENER HOCHDRUCK-ROHRLEITUNGSBAU

AS BUILT

E	MATERIAL : HANAU_AL			SCALE		TOLERANCES :		All components cleaned for oxygen	
D	Workplace edges			1:0.5		DN 28005		Similar:	MASS kg
C	outside			1:0.3		DN 6570		Subst.:	
B	inside			1:0.3		DN 7188 mittel		Replaced:	
A	ISO- Methode E			DATE : 30.06.2005		NAME : H.Schneider		 AIR LIQUIDE	
I	Rev. No.	Date	By	CHECK : Frickhöfer 01/07/05					
This drawing is not to be reproduced, copied or used directly or indirectly in any way detrimental to our interests unless specifically authorized in writing by				JOB CODE / REFERENCE :		11.7.05		SHEET : 3 OF SHEET : 4	
				K70101, ASU No.9 Kosice		Tide :		DRAWING No. : 79319833	
Air Liquide AGS GmbH Hanau				AL 43015				F Z C	



Anschluss von
Bl. 1

7° Steigung
70° - Bogen
121MM-Biegeradius
Z= +50148

Anschluss an 79319833
X= + 2040
Y= - 1672
Z= +49382

Bogen
97MM-Biegeradius
Z= +49382

13
160
14
160
15
160
16
160
BR

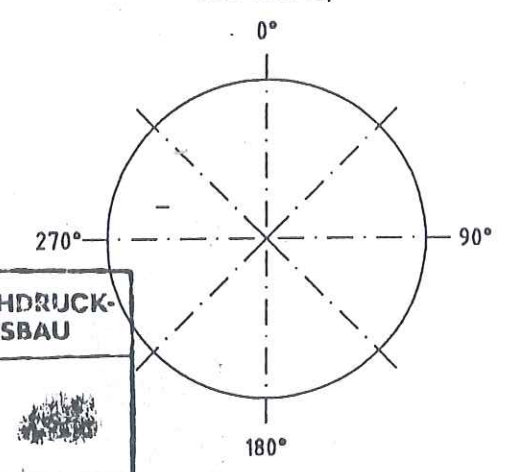
20
160
19
160
BR

18
160
17
160
BR

MATERIAL KONTR.		
CECK OF MAT.		
SCHWEISSEN		
WELDING		
MECHAN. FERTIGST.		
MECHAN. COMPL.		
DRUCKPROBE		
PRESSURE TEST		
EHR-PROJ.-NO.:	C-13005	
	ESSENER HOCHDRUCK- ROHRLEITUNGSBAU GMBH	Air Liquide AGS GmbH

=VENTILKASTEN 3, Vormontage
valve box 3, pre-fabricating

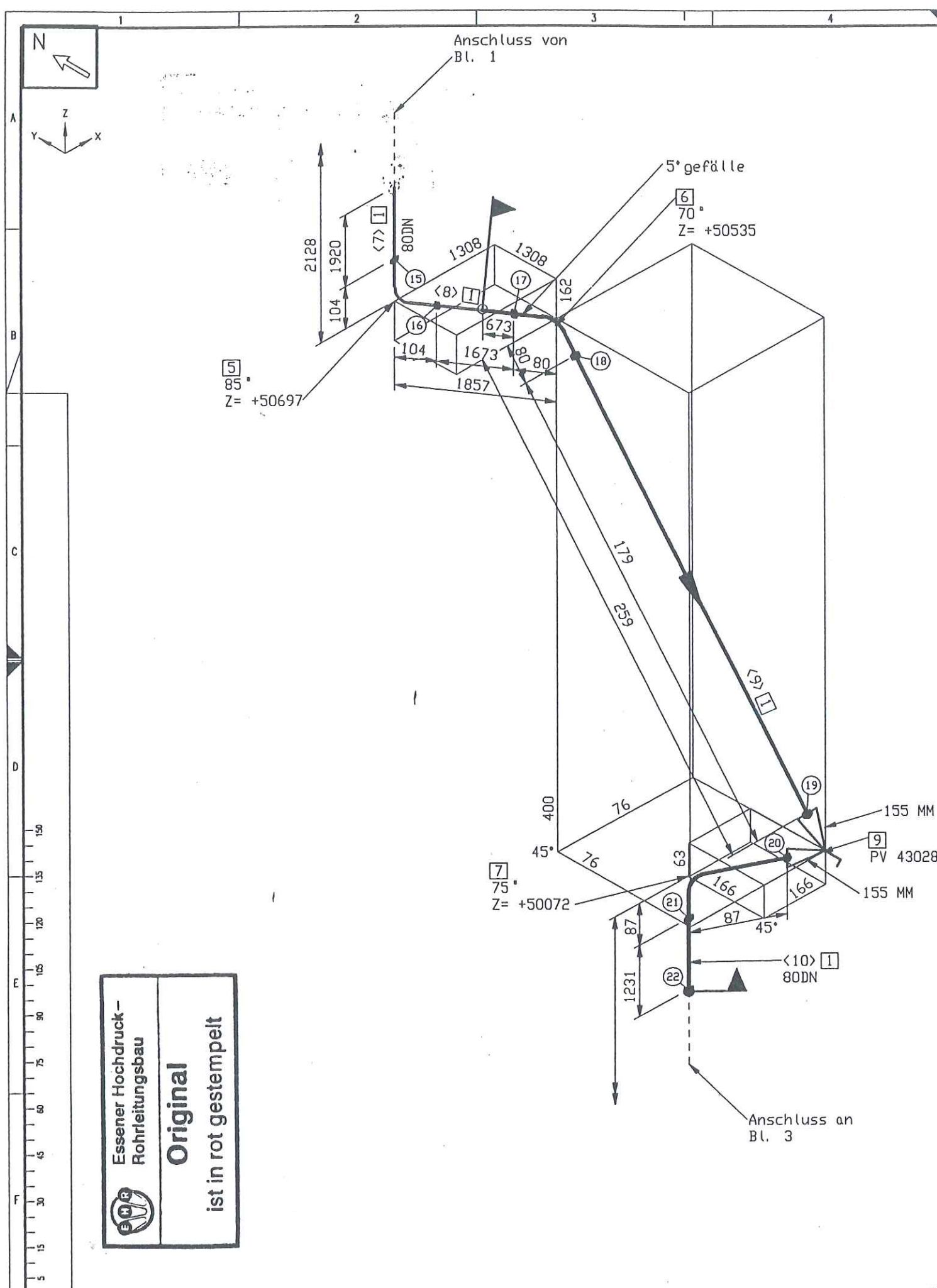
pipng support, piping guides
View from top



ESSENER HOCHDRUCK-
ROHRLEITUNGSBAU
AS BUILT


E D C B A				MATERIAL : HANAU AL		All components cleaned for oxygen	
	Workplace edges		SCALE	TOLERANCES :		Similar:	MASS kg
	-0.5 outside		+0.3 inside	DN 20005 DN 8570 DN 7168 initial			
	ISO- Methode E				DATE : 04.07.2005		Replaced:
					NAME : H.Schneider CHECK : Frickhöfer 04/07/05		
This drawing is not to be reproduced, copied or used directly or indirectly in any way detrimental to our interests unless specifically authorized in writing by				JOB CODE / REFERENCE :		AIR LIQUIDE	
				K70101, ASU No.9 Kosice		SHEET : 2 OF SHEET : 2	
Title :				AL 43007		DRAWING No. : 79319834	
Air Liquide AGS GmbH Hanau						F Z C	

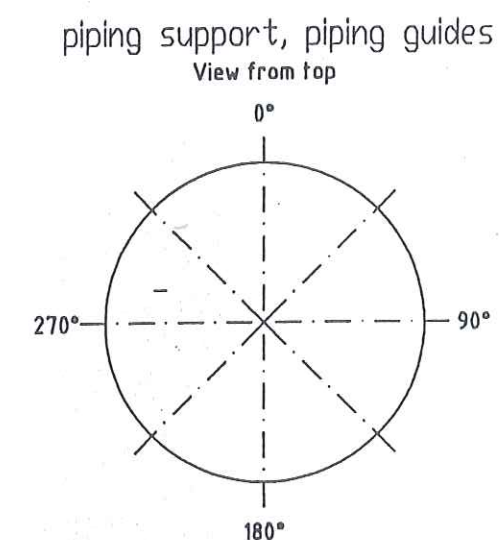
Essener Hochdruck-
Rohrleitungsbau
Original
ist in rot gestempelt

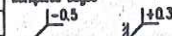
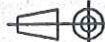



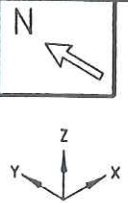
 **ESSENER HOCHDRUCK-
ROHRLEITUNGSBAU**

AS BUILT

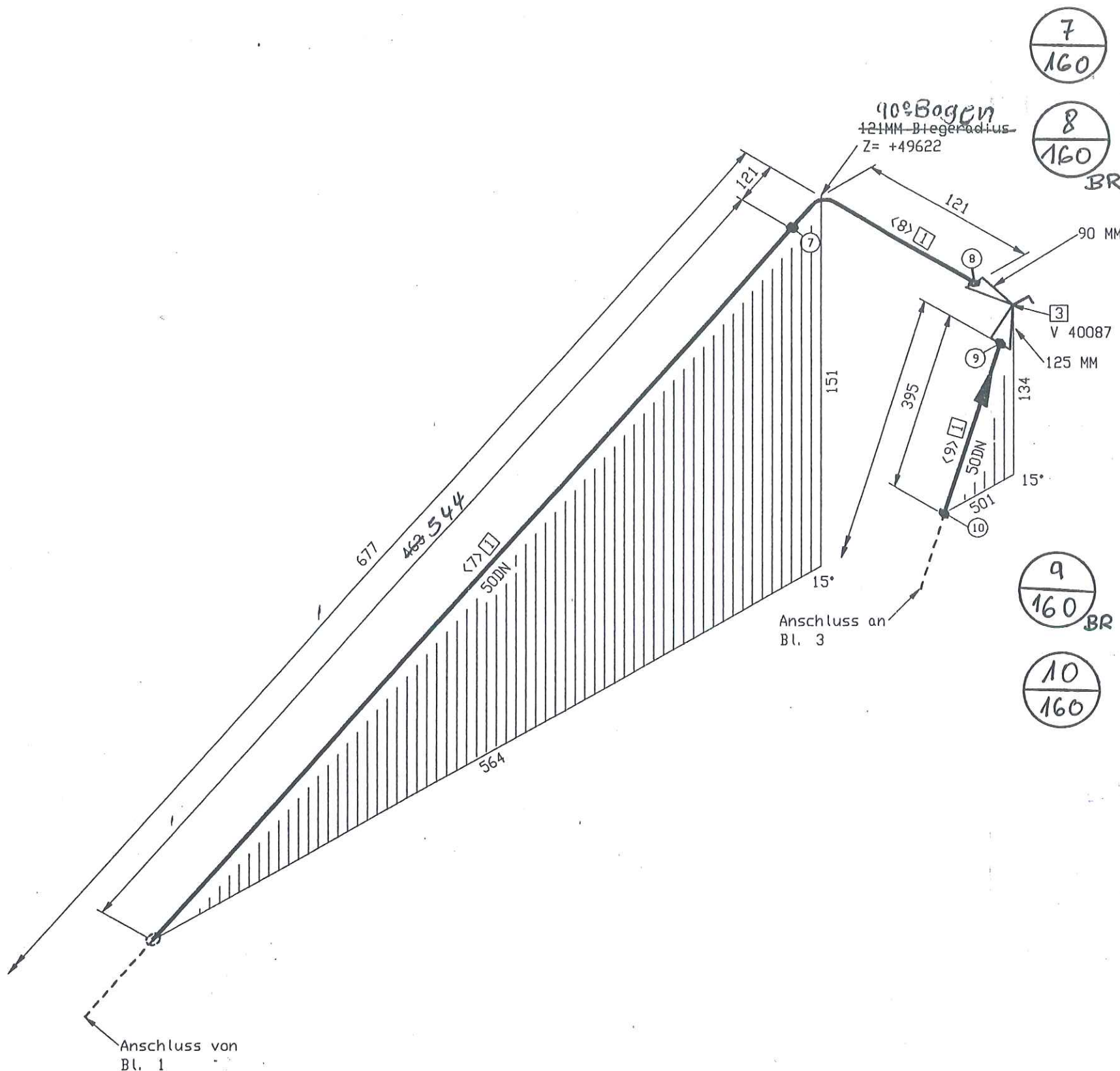
=VENTILKASTEN 3, Vormontage
valve box 3, pre-fabricating



E C B A				MATERIAL : HANAU_AL		All components cleaned for oxygen		
				Workpiece edges 	SCALE	TOLERANCES : DIN 28005 DIN 8570 DIN 7168 mittel	Similar:	MASS kg
							Subst.:	
								Replaced:
I	Rev. No.	Date	By	ISO- Methode E		DATE : 04.07.2005 NAME : H.Schneider CECK : Frickhöfer 04/07/05		
This drawing is not to be reproduced, copied or used directly or indirectly in any way detrimental to our interests unless specifically authorized in writing by Air Liquide AGS GmbH Hanau				JOB CODE / REFERENCE : K70101, ASU No.9 Kosice		 AIR LIQUIDE		
				Title :		SHEET : 2 OF SHEET : 3		
				N 43009		DRAWING No.: 79319835		



ISOMETRIE UM 45° GEDREHT GEZEICHNET



7
160

8
160

9
160

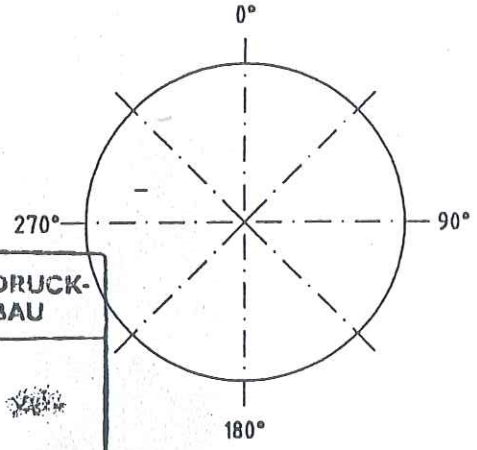
10
160



=VENTILKASTEN 3, Vormontage
valve box 3, pre-fabricating

MATERIAL KONTR.		
CHECK OF MAT.		
SCHWEISSEN		
WELDING		
MECHAN. FERTIGST.		
MECHAN. COMPL.		
DRUCKPROBE		
PRESSURE TEST		
EHR-PROJ.-NO.:	C-13005	
	ESSENER HOCHDRUCK- ROHRLEITUNGSBAU GMBH	Air Liquide AGS GmbH

piping support, piping guides
View from top

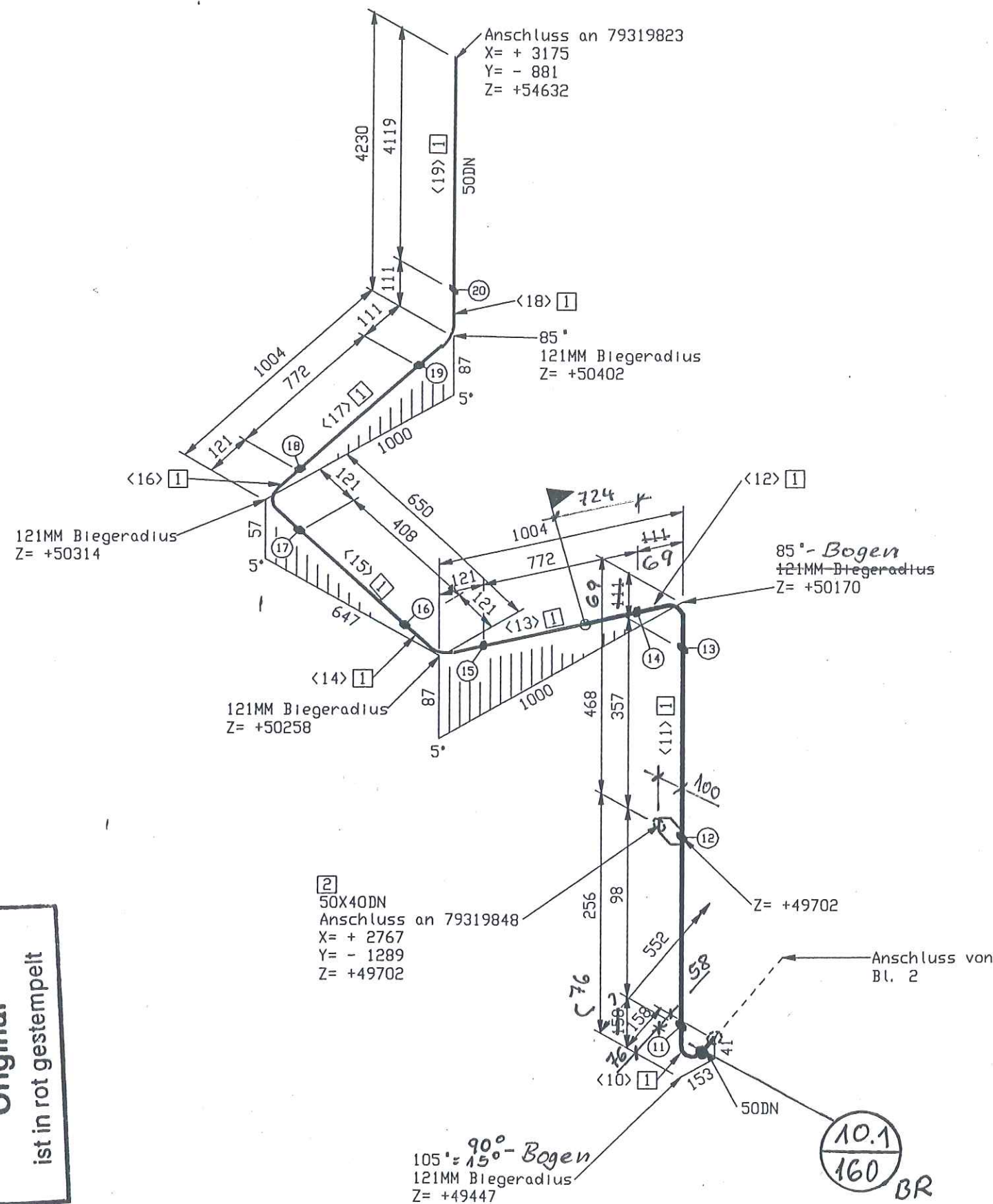
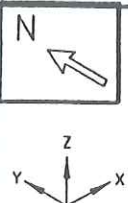


ESSENER HOCHDRUCK-
ROHRLEITUNGSBAU
AS BUILT

Essener Hochdruck-
Rohrleitungsbau
Original
ist in rot gestempelt

MATERIAL: HANAU_AL			SCALE		TOLERANCES:		All components cleaned for oxygen	
Workpiece edges			1:0.5		DN 20000		Similar:	MASS
outside			1:0.3		DN 0570		Subst:	kg
inside			1:0.3		DN 7168 mittel		Replaced:	
ISO-Methode E			DATE: 05.07.2005		NAME: H.Schneider		AIR LIQUIDE	
CECK: Frickhöfer 05/07/05			JOB CODE / REFERENCE:		1 1. 7. 05		SHEET: 2 OF SHEET: 3	
K70101, ASU No.9 Kosice			Title:		RL 40004		DRAWING No.: 79319837	
Air Liquide AGS GmbH Hanau							F Z C	

ISOMETRIE UM 45° GEDREHT GEZEICHNET



Essener Hochdruck-
Rohrleitungsbau
Original
ist in rot gestempelt

MATERIAL KONTR.		
CHECK OF MAT.		
SCHWEISSEN		
WELDING		
MECHAN. FERTIGST.		
MECHAN. COMPL.		
DRUCKPROBE		
PRESSURE TEST		
EHR-PROJ.-NO.:	C-13005	
	ESSENER HOCHDRUCK- ROHRLEITUNGSBAU GMBH	Air Liquide AGS GmbH

= VENTILKASTEN 3, Vormontage
valve box 3, pre-fabricating

14
160

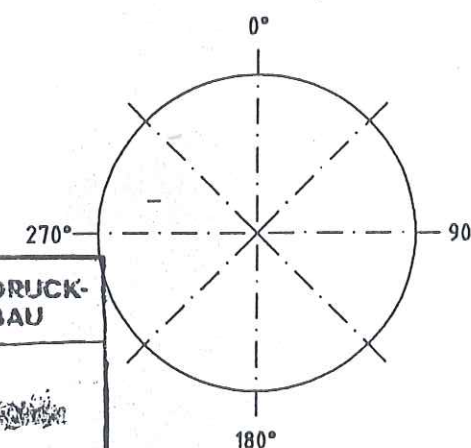
13
133

12
160

11
133

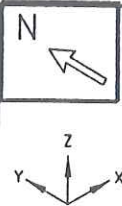
10.1
160 BR

piping support, piping guides
View from top

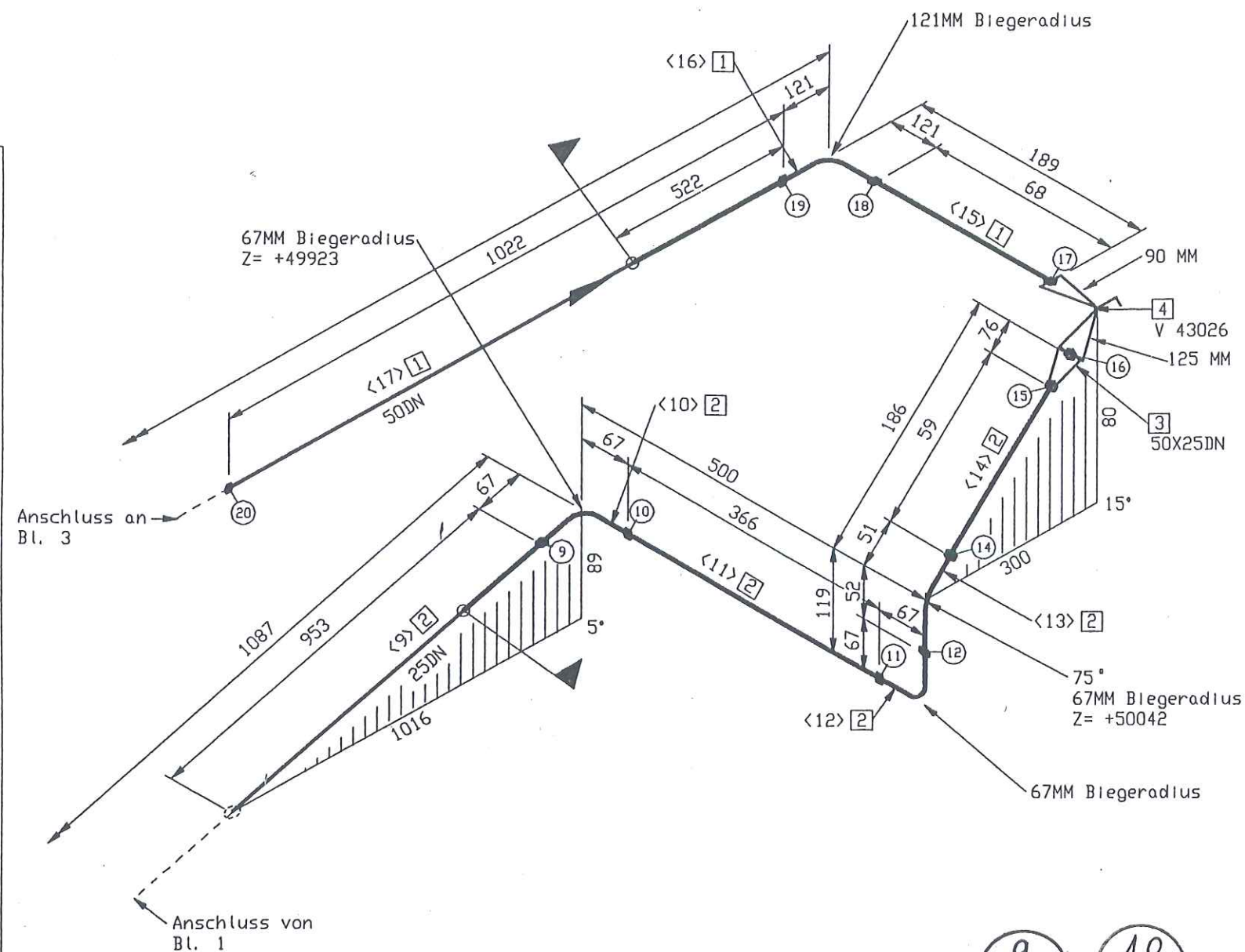


**ESSENER HOCHDRUCK-
ROHRLEITUNGSBAU**
AS BUILT

E D C B A				MATERIAL : HANAU AL	All components cleaned for oxygen			
				Workpiece edges -0.5 outside +0.3 inside	SCALE	TOLERANCES : DH 28005 DH 6570 DH 7168 mittel		
				ISO- Methode E	DATE : 05.07.2005	Similar:	MASS kg	
					NAME : H.Schneider	Subst.:		
					CHECK : Frickhöfer 05/07/05	Replaced:		
This drawing is not to be reproduced, copied or used directly or indirectly in any way detrimental to our interests unless specifically authorized in writing by				JOB CODE / REFERENCE : 1 1. 7. 05 K70101, ASU No.9 Kosice	AIR LIQUIDE			
Air Liquide AGS GmbH Hanau				RL 40004	SHEET : 3	OF SHEET : 3	DRAWING No.:	79319837
				Titel :			F 2	C



ISOMETRIE UM 45° GEDREHT GEZEICHNET



19
%

18
%

17
160
BR

16
160
BR

15
133
BR

14
%

12
133
BR

11
133
BR

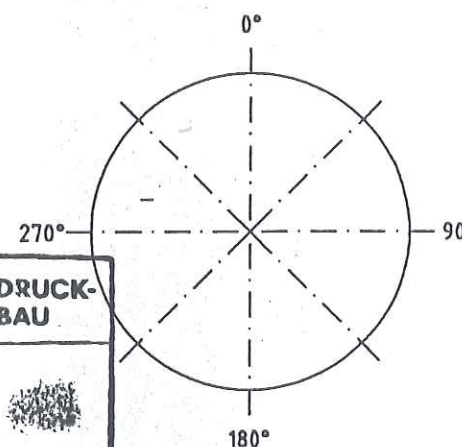
9
%

10
%

MATERIAL KONTR.		
CHECK OF MAT.		
SCHWEISSEN		
WELDING		
MECHAN. FERTIGST.		
MECHAN. COMPL.		
DRUCKPROBE		
PRESSURE TEST		
EHR-PROJ.-NO.:	C-13005	
	ESSENER HOCHDRUCK- ROHRLEITUNGSBAU GMBH	Air Liquide AGS GmbH

=VENTILKASTEN 3, Vormontage
valve box 3, pre-fabricating

piping support, piping guides
View from top







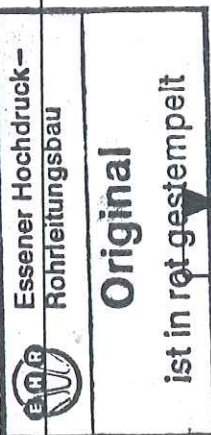
ESSENER HOCHDRUCK-
ROHRLEITUNGSBAU

AS BUILT

Essener Hochdruck-
Rohrleitungsbau

Original
ist in rot gestempelt

E				MATERIAL : HANAU_AL			All components cleaned for oxygen	
D				Workpiece edges	SCALE	TOLERANCES :		
C						DIM 28005		Similar:
B						DIM 0570		Subst:
A						DIM 7168 millil		Replaced:
I	Rev. No.	Date	By	ISO- Methode E 	DATE : 05.07.2005			
					NAME : H.Schneider			
					CHECK : Frickhöfer 05/07/05			
This drawing is not to be reproduced, copied or used directly or indirectly in any way detrimental to our interests unless specifically authorized in writing by				JOB CODE / REFERENCE :		 AIR LIQUIDE		
				1 1. 7 05				
				K70101, ASU No.9 Kosice		SHEET : 2 OF SHEET : 3		
Air Liquide AGS GmbH Hanau				Title :		DRAWING No.:		
				RL 43006		79319838		



=VENTILKASTEN 3, Vormontage
valve box 3, pre-fabricating


Eingang TMI

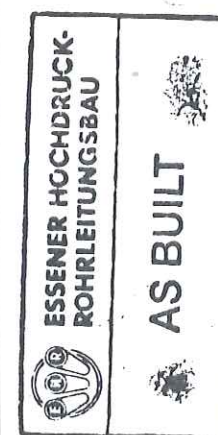
20. Juli 2005

Erledigt:

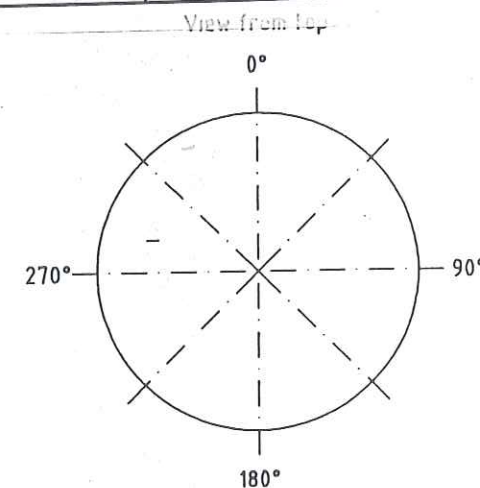
Stückliste					
Lfd Nr.	Benennung	DN (MM)	Sachnummer	Menge	Gewicht (kg)
	<u>Rohr</u>			6108	
1	ROHR 48,3 X 5,1 ALMG4,5MM V27	40	77038145	6204 MM	10.3
	<u>Flansch</u>				
2	AUSSENMANTELDURCHFÜHRUNG DN 40	40	793.12878	1	1.3
Summe Masse					11.6




Rohrzuschnitt					
Bohr- Stk.	Länge (MM)	lIN (MM)	Bemerkung	Rohr- Ende 1	Rohr- Ende 2
					Sachnummer
<1>	79 36	40			77038145
<2>	224	40	PLD BEND(1)		77038145
<3>	79 40	40			77038145
<4>	186	40	PLD BEND(1)		77038145
<5>	1650 1751	40			77038145
<6>	152	40	PLD BEND(1)		77038145
<7>	396 426	40			77038145
<8>	152	40	PLD BEND(1)		77038145
<9>	982 924	40			77038145
<10>	144	40	PLD BEND(1)		77038145
<11>	465 154	40			77038145
<12>	152	40	PLD BEND(1)		77038145
<13>	486 426	40			77038145
<14>	152	40	PLD BEND(1)		77038145
<15>	487 76	40			77038145
<16>	152	40	PLD BEND(1)		77038145
<17>	488 426	40			77038145
<18>	152	40	PLD BEND(1)		77038145
<19>	410 383	40			77038145

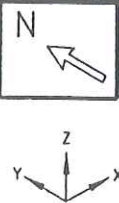
MATERIAL KONTR.		
CECK OF MAT.		
SCHWEISSEN		
WELDING		
MECHAN. FERTIGST.		
MECHAN. COMPL.		
DRUCKPROBE		
PRESSURE TEST		
EHR-PROJ.-NO.:	C-13005	 ESSENER HOCHDRUCK- ROHRLEITUNGSBAU GMBH Air Liquide AGS GmbH



Rohr DN (MM)	40
CL Länge (MM)	5576



E D C B A				MATERIAL : HANAU_AL	All components cleaned for oxygen	
				Workpiece edges 	SCALE	TOLERANCES : DIN 28005 DIN 8570 DIN 7188 mittel
				ISO- Methode E 	DATE : 20.07.2005	
	1	Rev. No.	Date	By	NAME : H.Schneider CECK : Frickhöfer 05/07/05	<div> <div>Similar:</div> <div>Subst:</div> <div>Replaced:</div> </div> <div> <div>MASS kg</div> </div>
<p>This drawing is not to be reproduced, copied or used directly or indirectly in any way detrimental to our interests unless specifically authorized in writing by</p> <p>Air Liquide AGS GmbH Hanau</p>				<div>  AIR LIQUIDE </div> <div> <div>SHEET : 1</div> <div>OF SHEET : 1</div> </div> <div> <div>DRAWING No.:</div> <div>79319842</div> </div> <div> <div>F Z</div> <div>C</div> </div>		
				<div> <div>JOB CODE / REFERENCE :</div> <div>K70101, ASU No.9 Kosice</div> </div> <div> <div>Titre :</div> <div>□ 40008</div> </div>		



ISOMETRIE UM 45° GEDREHT GEZEICHNET

90°-Bogen 1,5D
97MM-Biegeradius

Anschluss an 79319837
X= + 2767
Y= - 1289
Z= +49702

90°-Bogen 1,5D
97MM-Biegeradius
Z= +49330

85°-Bogen 1,5D
97MM-Biegeradius
Z= +49380

3
40X25DN

1.1
160
BR

1
160
BR

2
160
BR

3
160
BR

4
160
BR

5
160
BR

6
160
BR

7
160
BR

8
160
BR

9
160
BR

10
160
BR

11
160
BR

12
160
BR

Stückliste

Lfd Nr.	Benennung	DN (MM)	Sachnummer	Menge	Gewicht (kg)
Rohr					
1	ROHR 48,3 X 5,1 ALMG4, 5MN W27	40	77038145	5893 MM	10.9
2	ROHR 33,4 X 3,4 ALMG4, 5MN W27	25	77038144	1935 MM	1.7
Fitting					
3	RED.-STÜCK-K- 48,3 x 5,1- 33,4 x 5,1	40X25	793.14612	3	0.4
4	ANALYSENLEITUNG	40X25	793.13574	1	44.0
5	ULTRASCHALL-Dfn. (Beistellteil)	25	770.39462	1	8.0
Ventil					
6	Eck-Ventil AL DN 25 / PN 40	25	770.38864	1	40.0
Summe Masse					105.0

Rohrzuschnitt

Rohr Stk.	Länge (MM)	DN (MM)	Bemerkung	Rohr Ende 1	Rohr Ende 2	Sachnummer
<1>	478	40				77038145
<2>	152	40	PLD BEND(1)			77038145
<3>	136	40				77038145
<4>	144	40	PLD BEND(1)			77038145
<5>	393	40				77038145
<6>	152	40	PLD BEND(1)			77038145
<7>	109	40				77038145
<8>	400	25				77038144
<9>	933	25				77038144
<10>	105	25	PLD BEND(1)			77038144
<11>	7	25				77038144
<12>	87	25	PLD BEND(1)			77038144
<13>	37	25				77038144
<14>	100	40				77038145
<15>	152	40	PLD BEND(1)			77038145
<16>	613	40				77038145
<17>	148	40	PLD BEND(1)			77038145
<18>	735	40				77038145
<19>	144	40	PLD BEND(1)			77038145
<20>	33	40				77038145
<21>	135	40	PLD BEND(1)			77038145
<22>	2269	40				77038145
<23>	200	25				77038144
<24>	100	25	PLD BEND(1)			77038144
<25>	66	25				77038144

pipng support, piping guides
View from top



Rohr DN (MM) 40 25
CL Länge (MM) 6086 2803

MATERIAL KONTR.	CECK OF MAT.	SWEISSEN	WELDING
MECHAN. FERTIGST.	MECHAN. COMPL.	DRUCKPROBE	PRESSURE TEST
EHR-PROJ.-NO.	C-13005	ESSENER HOCHDRUCK-ROHRLEITUNGSBAU GMBH	AIR LIQUIDE

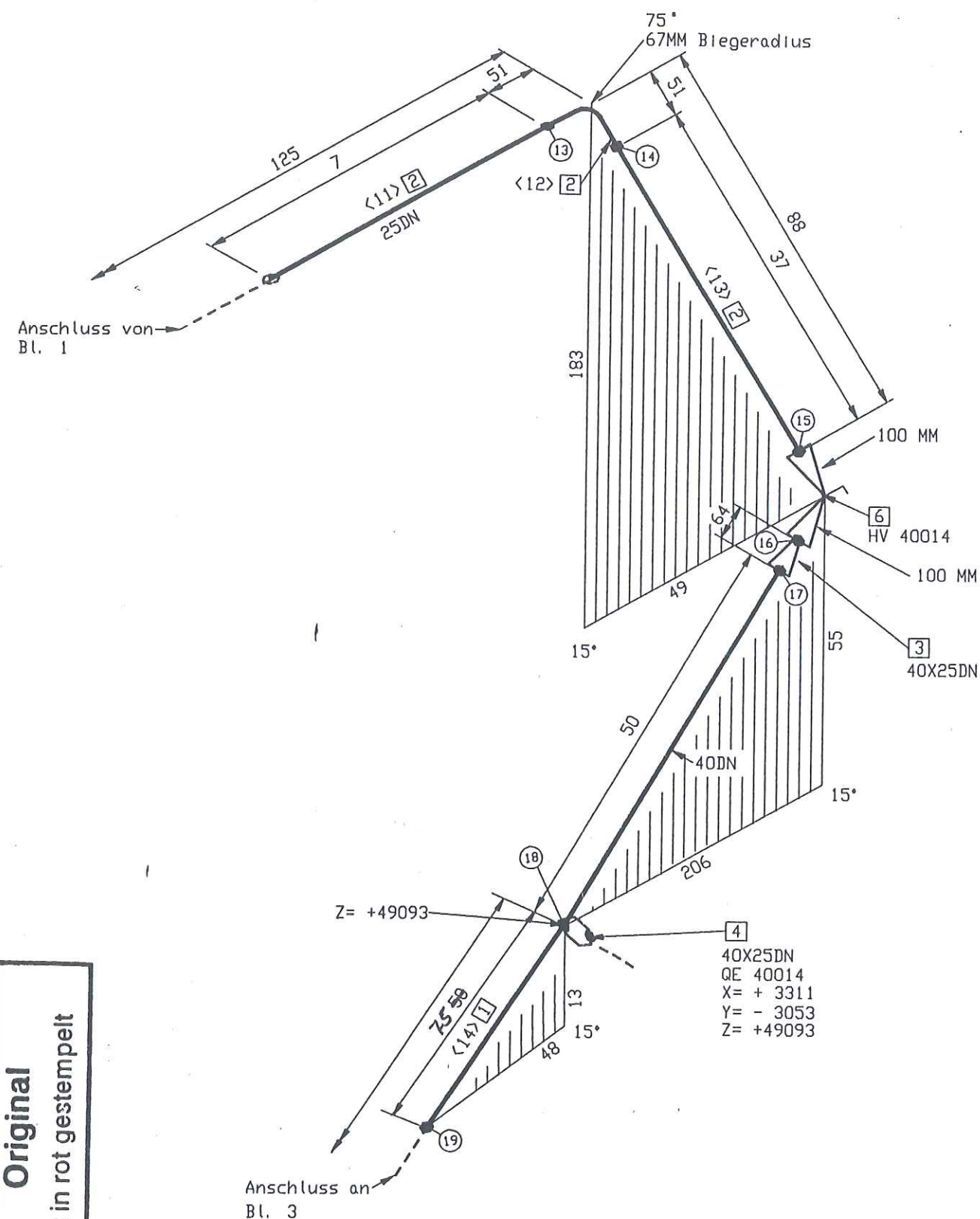
180°

MATERIAL : HANAU AL		TOLERANCES :		All components cleaned for oxygen	
Workpiece edges	1:0.3	SCALE	DN 28005 DN 8570 DN 7168 mittel	Shrinker:	MASS kg
ISO-Methode E		DATE : 06.07.2005	NAME : H.Schneider	Subst.:	Replacat
This drawing is not to be reproduced, copied or used directly or indirectly in any way detrimental to our interests unless specifically authorized in writing by		CECK : Frickhöfer 06/07/05		AIR LIQUIDE	
JOB CODE / REFERENCE :		1 1. 7. 05		SHEET : 1 OF SHEET : 3	
K70101, ASU No.9 Kosice		DRAWING No.:		79319848	
Air Liquide AGS GmbH Hanau		RL 40004		F 2	

Essener Hochdruck-
Rohrleitungsbau
Original
ist in rot gestempelt

=VENTILKASTEN 3, Vormontage
valve box 3, pre-fabricating

ISOMETRIE UM 45° GEDREHT GEZEICHNET



13
160
BR

14
/

15
160
BR

16
164
BR

17
160

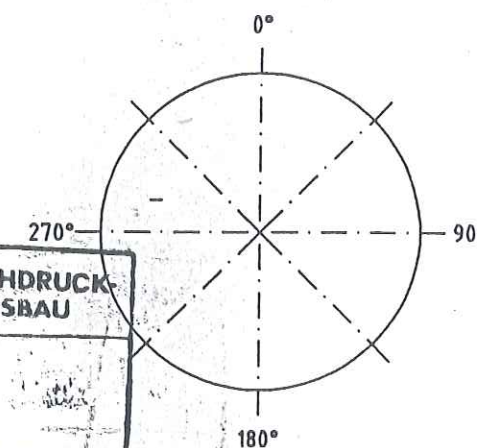
18
160

19
133

MATERIAL KONTR.		
CECK OF MAT.		
SCHWEISSEN		
WELDING		
MECHAN. FERTIGST.		
MECHAN. COMPL.		
DRUCKPROBE		
PRESSURE TEST		
EHR-PROJ.-NO.:	C-13005	
	ESSENER HOCHDRUCK- ROHRLEITUNGSBAU GMBH	Air Liquide AGS GmbH

VENTILKASTEN 3, Vormontage
valve box 3, pre-fabricating

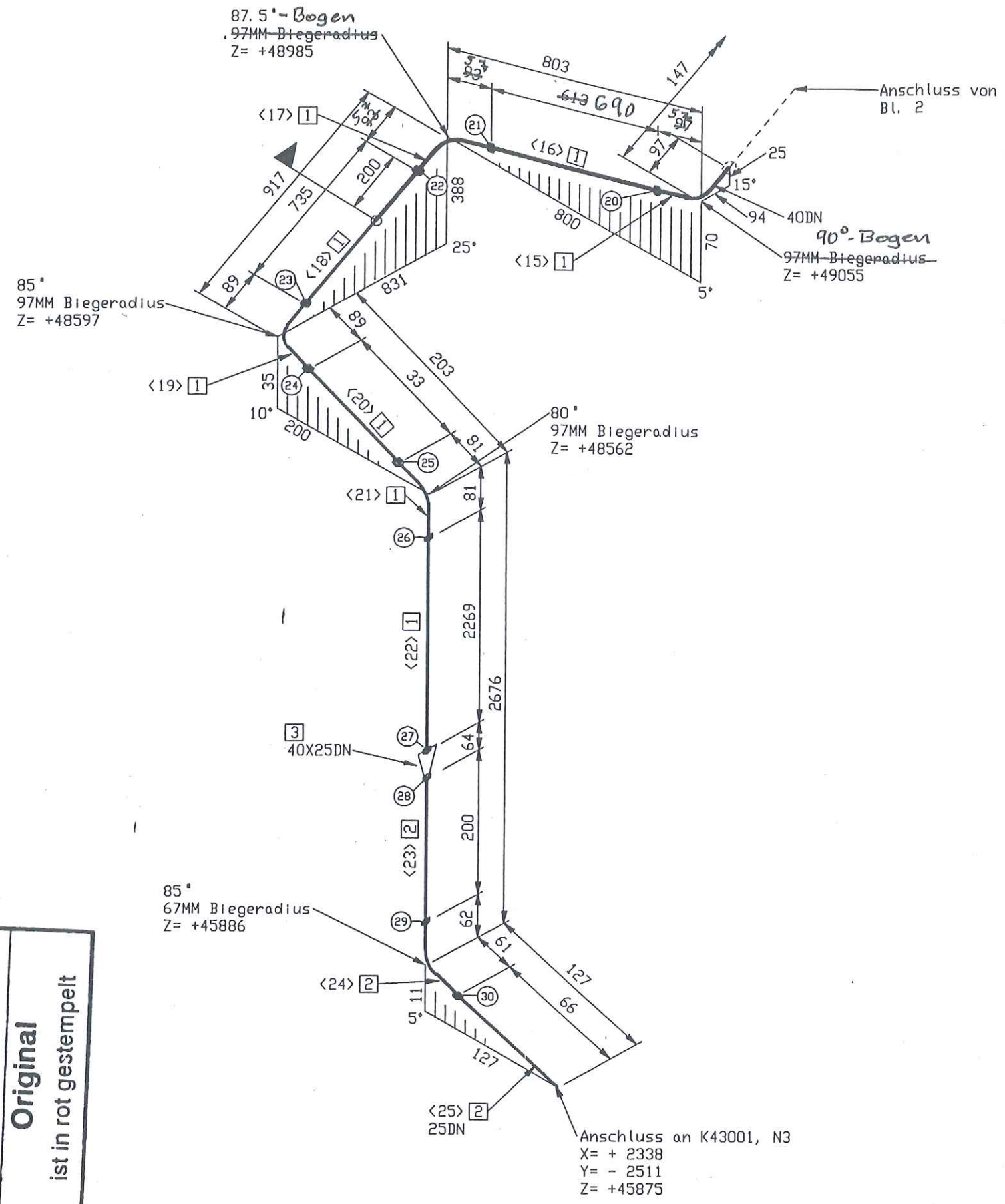
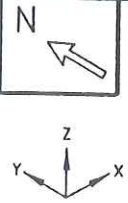
piping support, piping guides
View from top



ESSENER HOCHDRUCK-
ROHRLEITUNGSBAU
AS BUILT

Essener Hochdruck-
Rohrleitungsbau
Original
ist in rot gestempelt

MATERIAL : HANAU AL			SCALE		TOLERANCES :		All components cleaned for oxygen	
Workpiece edges			1:0.3		DN 28005		Striker:	
outside			inside		DN 8570		Subst:	
ISO- Methode E			DATE : 06.07.2005		NAME : H.Schneider		Replaced:	
Rev. No.			Date		CECL : Frickhöfer 06/07/05		AIR LIQUIDE	
By			JOB CODE / REFERENCE :		1 1. 7 05		SHEET : 2 OF SHEET : 3	
This drawing is not to be reproduced, copied or used directly or indirectly in any way detrimental to our interests unless specifically authorized in writing by			K70101, ASU No.9 Kosice		DRAWING No.:		79319848	
Air Liquide AGS GmbH Hanau			RL 40004		F 2		C	

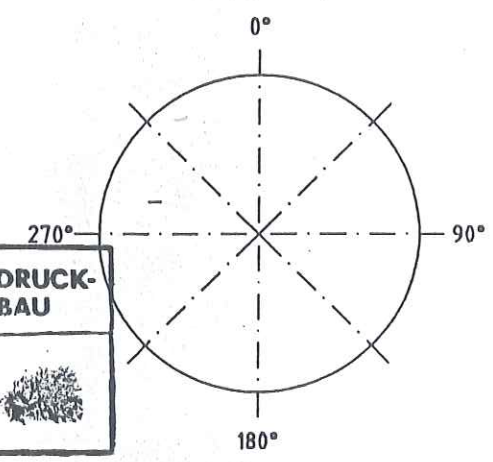


ISOMETRIE UM 45° GEDREHT GEZEICHNET

MATERIAL KONTR.		
CHECK OF MAT.		
SCHWEISSEN		
WELDING		
MECHAN. FERTIGST.		
MECHAN. COMPL.		
DRUCKPROBE		
PRESSURE TEST		
EHR-PROJ.-NO.:	C-13005	
	ESSENER HOCHDRUCK-ROHRLEITUNGSBAU	Air Liquide AGS GmbH

 = VENTILKASTEN 3, Vormontage
valve box 3, pre-fabricating


pipng support, piping guides
View from top

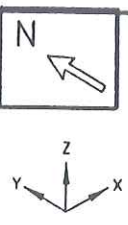


**ESSENER HOCHDRUCK-ROHRLEITUNGSBAU**

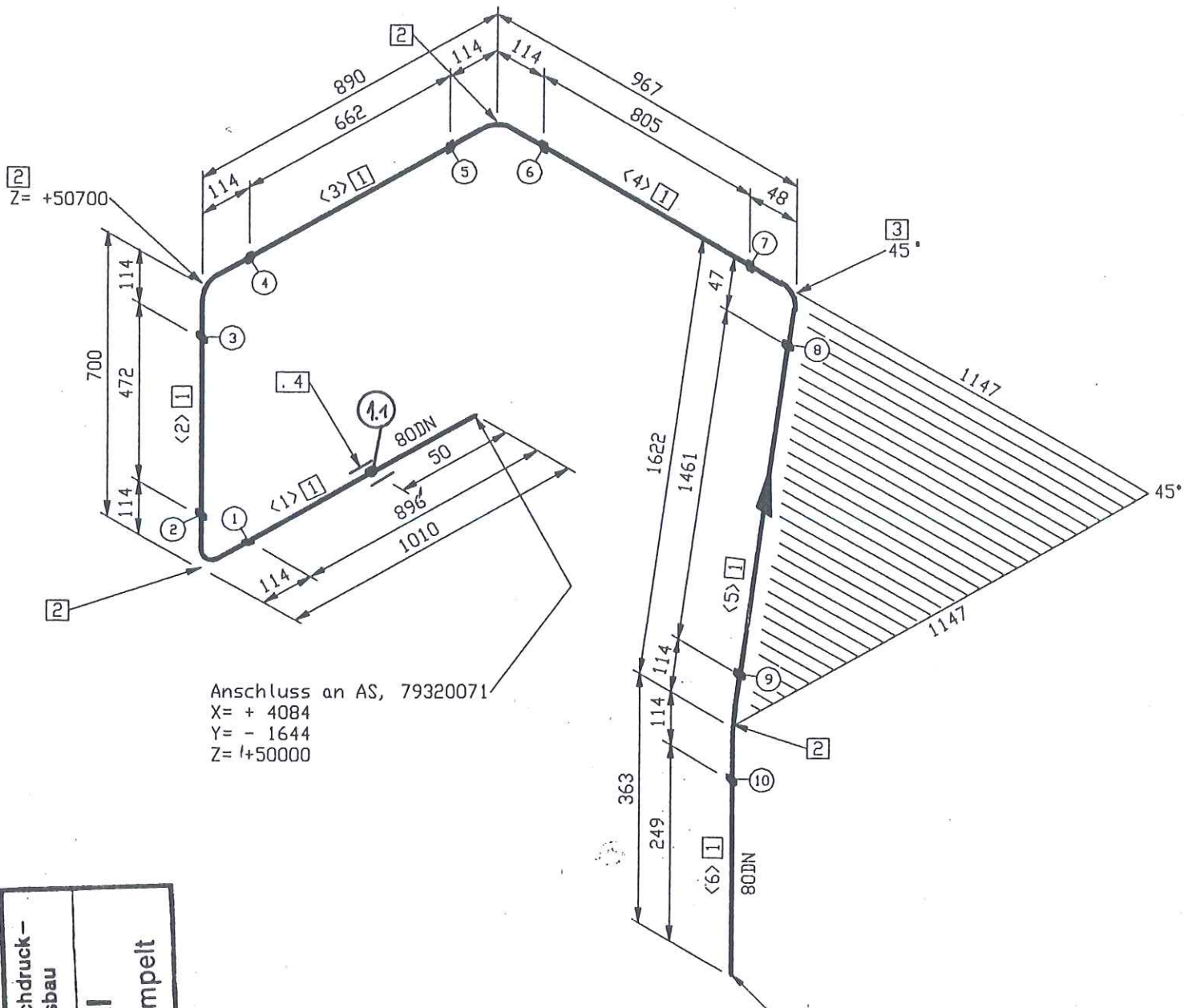
**AS BUILT**

Essener Hochdruck-Rohrleitungsbau
Original
ist in rot gestempelt

MATERIAL : HANAU AL			All components cleaned for oxygen	
Workpiece edges	SCALE	TOLERANCES :	Similar:	MASS
-0.5		DN 28005		kg
outside		DN 8570	Subst:	
		DN 7168 mittel	Replaced:	
ISO-Methode E	DATE : 06.07.2005	NAME : H.Schneider		
	CHECK : Frickhöfer 06/07/05			
JOB CODE / REFERENCE :			SHEET : 3	OF SHEET : 3
K70101, ASU No.9 Kosice			DRAWING No.:	F 2
Title :			79319848	C
Air Liquide AGS GmbH Hanau			RL 40004	



ISOMETRIE UM 45° GEDREHT GEZEICHNET



Anschluss an AS, 79320071
X= + 4084
Y= - 1644
Z= +50000

Anschluss an 79319850
X= + 1693
Y= - 2243
Z= +50337

Essener Hochdruck-
Rohrleitungsbau
Original
ist in rot gestempelt

- 1.1
160
- 1
160 BR
- 2
160
- 3
160
- 4
160
- 5
160
- 6
160 BR
- 7
160
- 8
160 BR
- 9
160
- 10
160

Stückliste

Lfd Nr.	Benennung	DN (MM)	Sachnummer	Menge	Gewicht (kg)
Rohr					
1	ROHR 88,9 X 5,5 ALMG4, 3MM V27	80	77038147	4545 MM	17.7
Fitting					
2	BOGEN 88,9x5,5 DIN2605-2-90-3 ALMG4, 3MM	80	77038156	4	2.8
3	BOGEN 88,9x5,5 DIN2605-2-90-3 ALMG4, 3MM	80	77038156_1	1	0.7
Stützen auf 45					
Halterung					
4	Bordscheibe gez. auf 79313040	80	79313043	1	-
Summe Masse					21.2

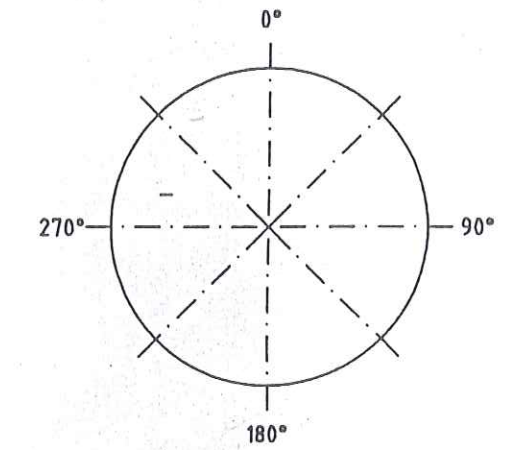
Rohrzuschnitt

Rohr Stk.	Länge (MM)	DN (MM)	Bemerkung	Rohr Ende 1	Rohr Ende 2	Sachnummer
<1>	896	80				77038147
<2>	472	80				77038147
<3>	662	80				77038147
<4>	805	80				77038147
<5>	1461	80				77038147
<6>	249	80				77038147

MATERIAL KONTR. CHECK OF MAT.		
SCHWEISSEN WELDING		
MECHAN. FERTIGST. MECHAN. COMPL.		
DRUCKPROBE PRESSURE TEST		
EHR-PROJ-NO.: C-13005	ESSENER HOCHDRUCK- ROHRLEITUNGSBAU GMBH	Air Liquide AGS GmbH

ESSENER HOCHDRUCK-
ROHRLEITUNGSBAU
AS BUILT

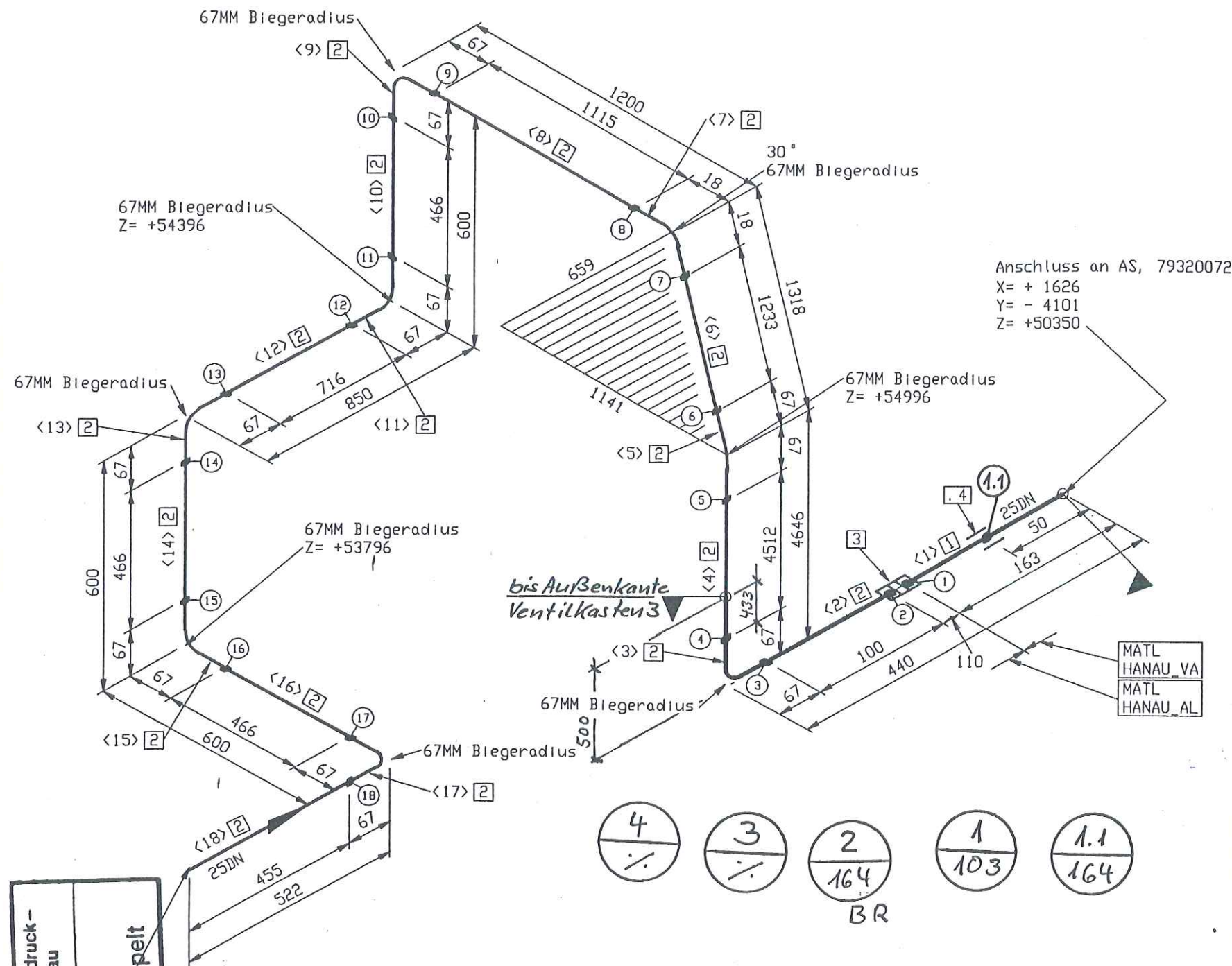
piping support, piping guides
View from top



Rohr DN (MM) 80
CL Länge (MM) 5552

MATERIAL : HANAU AL		SCALE		TOLERANCES :		All components cleaned for oxygen	
Workpiece edges -0.5		+0.3		DIN 28005 DIN 8570 DIN 7168 mittel		Similar: MASS kg	
ISO-Methode E		DATE : 06.07.2005		NAME : H.Schneider		Replaces:	
This drawing is not to be reproduced, copied or used directly or indirectly in any way detrimental to our interests unless specifically authorized in writing by		CHECK : Frickhöfer 06/07/05		JOB CODE / REFERENCE : 11.7.05		AIR LIQUIDE	
Air Liquide AGS GmbH Hanau		K70101, ASU No.9 Kosice		TITLE : A 15046		SHEET : 1 OF SHEET : 1	
						DRAWING No.: 79319851	

ISOMETRIE UM 45° GEDREHT GEZEICHNET

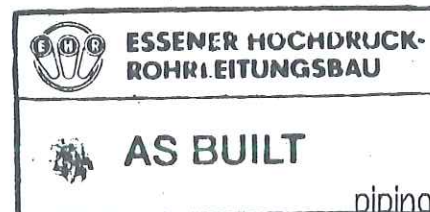


Stückliste

Lfd. Nr.	Benennung	DN (MM)	Sachnummer	Menge	Gewicht (kg)
1	ROHR 21,3 X 2,8	25	0002063	163 MM	0,2
2	ROHR 33,4 X 3,4 ALMG4, 5MM W27	25	77038144	40299-MM	9,1
Fitting					
3	TRANSITION JOINT DN 25-DN15/PN40	25	770.38356	1	0,2
Halterung					
4	Bordscheibe gezeichnet auf 79313040	25	79313295	1	-
Summe Masse					9,5

Rohrzuschnitt

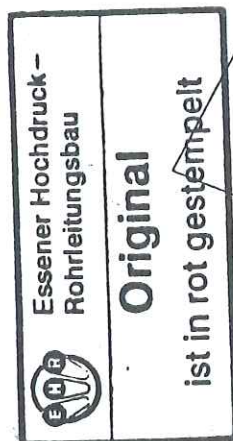
Rohr Stk.	Länge (MM)	DN (MM)	Bemerkung	Rohr Ende 1	Rohr Ende 2	Sachnummer
<1>	163	25				0002063
<2>	100	25				77038144
<3>	105	25	PLD BEND(1)			77038144
<4>	4512	25				77038144
<5>	185	25	PLD BEND(1)			77038144
<6>	1233	25				77038144
<7>	35	25	PLD BEND(1)			77038144
<8>	1115	25				77038144
<9>	105	25	PLD BEND(1)			77038144
<10>	466	25				77038144
<11>	105	25	PLD BEND(1)			77038144
<12>	716	25				77038144
<13>	105	25	PLD BEND(1)			77038144
<14>	466	25				77038144
<15>	105	25	PLD BEND(1)			77038144
<16>	466	25				77038144
<17>	105	25	PLD BEND(1)			77038144
<18>	455	25				77038144



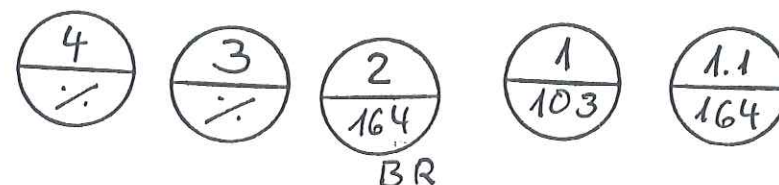
View from top
0°
180°

MATERIAL KONTR. CHECK OF MAT.		
SCHWEISSEN WELDING		
MECHAN. FERTIGST. MECHAN. COMPL.		
DRUCKPROBE PRESSURE TEST		
EHR-PROJ.-NO.	C-13005	
	ESSENER HOCHDRUCK- ROHRLEITUNGSBAU GMBH	Air Liquide AGS GmbH

Rohr DN (MM) 25
CL Länge (MM) 10574

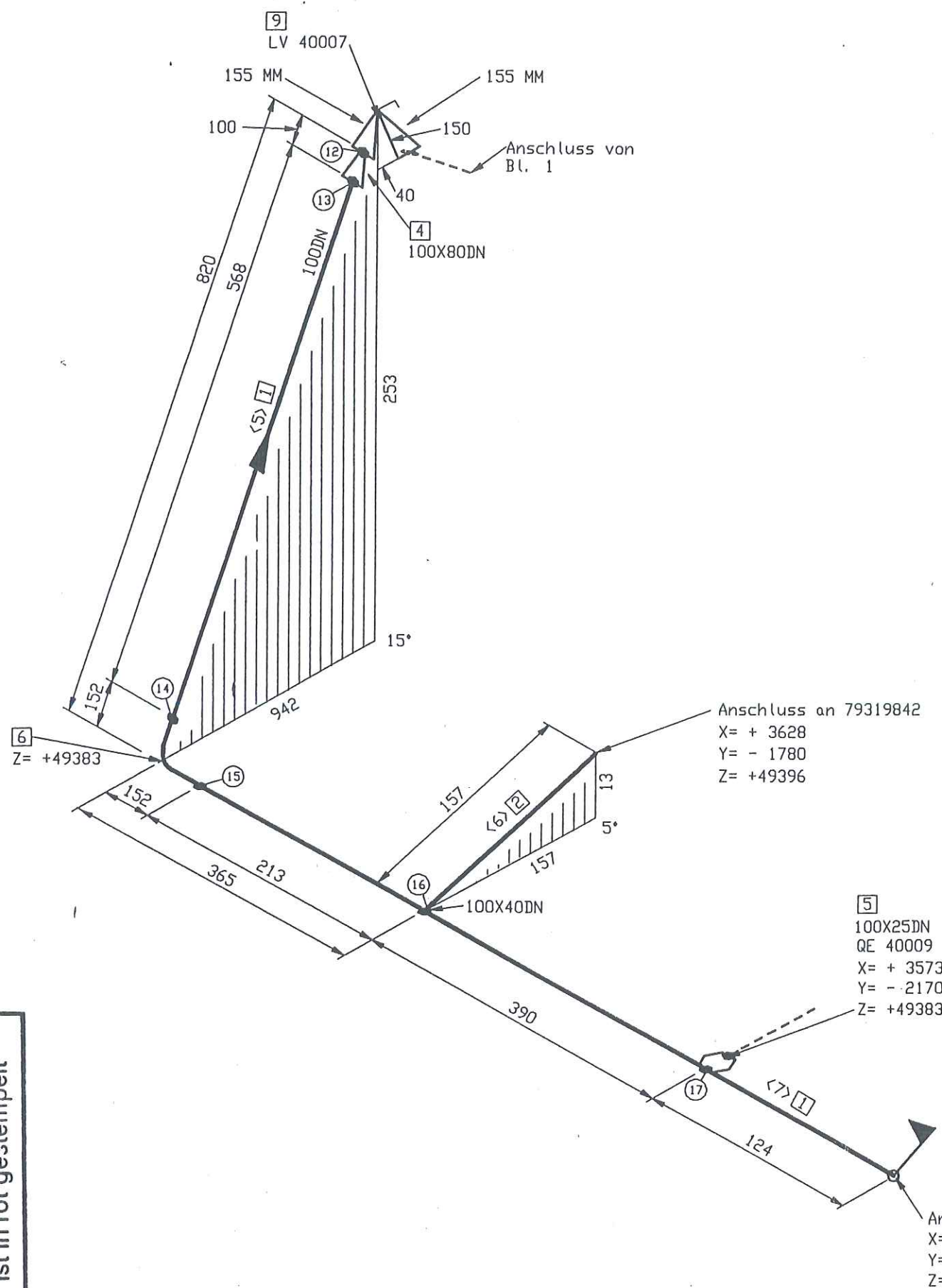
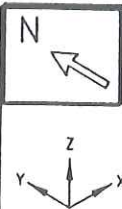


Anschluss an 79319835
X= + 2042
Y= - 2055
Z= +53796



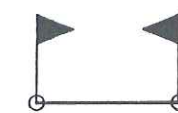
VENTILKASTEN 3, Vormontage
valve box 3, pre-fabricating



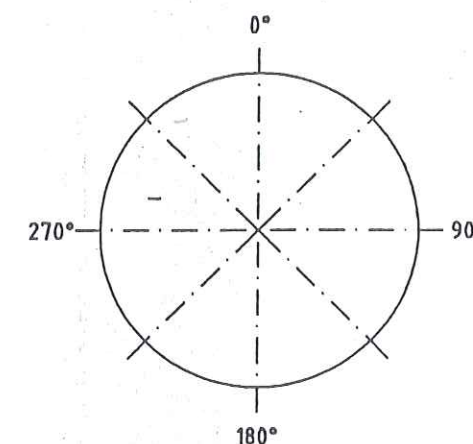


ISOMETRIE UM 45° GEDREHT GEZEICHNET

MATERIAL KONTR.		
CHECK OF MAT.		
SCHWEISSEN		
WELDING		
MECHAN. FERTIGST.		
MECHAN. COMPL.		
DRUCKPROBE		
PRESSURE TEST		
EHR-PROJ.-NO.:	C-13005	
	ESSENER HOCHDRUCK- ROHRLEITUNGSBAU GMBH	Air Liquide AGS GmbH

 = VENTILKASTEN 3, Vormontage
valve box 3, pre-fabricating

View from top
0°
90°
180°
270°



Essener Hochdruck-
Rohrleitungsbau
Original
ist in rot gestempelt

12
160
BR

13
133

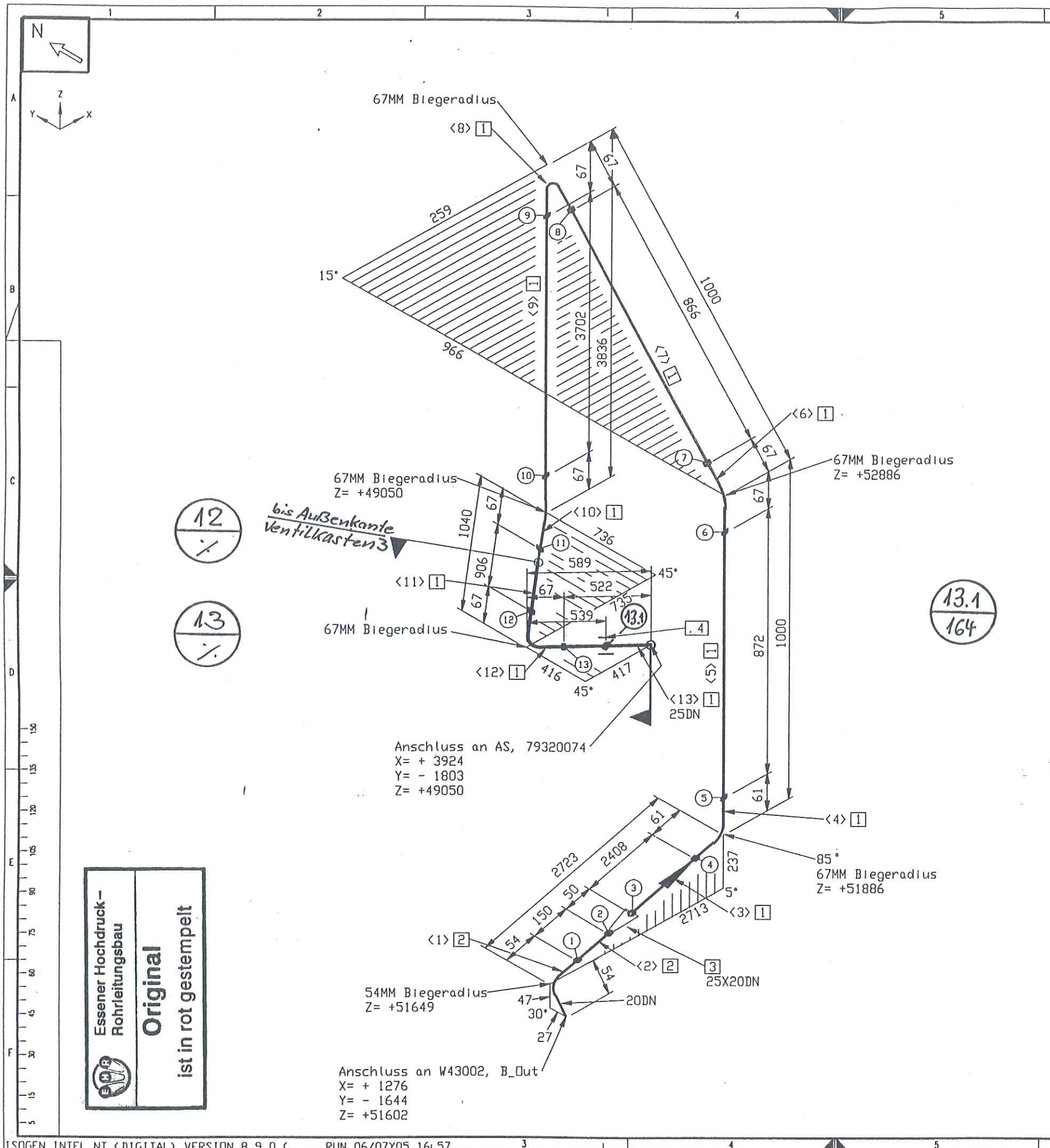
14
133

15
164

16
160

17
160

MATERIAL: HANAU AL			SCALE		TOLERANCES:		All components cleaned for oxygen	
Workpiece edges			1:0.5		DN 20005		Similar:	
outside			1:0.3		DN 6570		Subst:	
inside			1:0.3		DN 7168 mittel		Replaced:	
ISO-Methode E			DATE: 08.07.2005		NAME: H.Schneider		AIR LIQUIDE	
JOB CODE / REFERENCE:			1 1. 7. 05		K70101, ASU No.9 Kosice		SHEET: 2 OF SHEET: 2	
Title:			DL 40007		DRAWING No.:		79319863	
Air Liquide AGS GmbH Hanau							F Z	



Stückliste

Lfd. Nr.	Benennung	DN (MM)	Sachnummer	Menge	Gewicht (kg)
1	ROHR 33,4 X 3,4 ALMG4, 5MN W27	25	77038144	9795 MM	8.6
2	ROHR 26,7 X 3,9 ALMG4, 5MN W27	20	77038143	235 MM	0.2
Fitting					
3	RED. STÜCK K-33,4 X 3,4 26,7 X 3,9	25X20	77038440	1	0.1
Haltering					
4	Bordscheibe gez. auf 79313040	25	79313040	1	-
Summe Masse					8.9

Rohrzuschnitt

Rohr Stk.	Länge (MM)	DN (MM)	Bemerkung	Rohr Ende 1	Rohr Ende 2	Sachnummer
<1>	85	20	PLD BEND(1)			77038143
<2>	150	20				77038143
<3>	2408	25				77038144
<4>	99	25	PLD BEND(1)			77038144
<5>	872	25				77038144
<6>	105	25	PLD BEND(1)			77038144
<7>	866	25				77038144
<8>	105	25	PLD BEND(1)			77038144
<9>	3702	25				77038144
<10>	105	25	PLD BEND(1)			77038144
<11>	906	25				77038144
<12>	105	25	PLD BEND(1)			77038144
<13>	522	25				77038144

VENTILKASTEN 3, Vormontage
valve box 3, pre-fabricating
 piping support, piping guides
 View from top

0°

180°

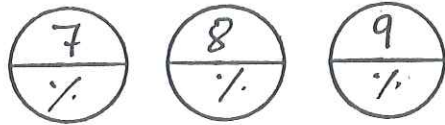
MATERIAL KONTR. / CHECK OF MAT.	EHR 74	
SCHWEISSEN / WELDING		
MECHAN. FERTIGST. / MECHAN. COMPL.		
DRUCKPROBE / PRESSURE TEST		
EHR-PROJ.-NO. / C-13005		

ESSENER HOCHDRUCK-ROHRLEITUNGSBAU
 Air Liquide AGS GmbH

Rohr DN (MM) 25 20
 CL Länge (MM) 9845 235

MATERIAL: HANAU AL	SCALE	TOLERANCES:	All components cleaned for oxygen
Workpiece edges	1:0.5	DN 28005	Shaller:
outside	1:0.3	DN 8570	Subst:
inside		DN 7168 mittel	Replaced:
ISO- Methode E	DATE: 06.07.2005	NAME: H.Schneider	
	CHECK: Frickhöfer 06/07/05		
JOB CODE / REFERENCE: 1 1. 7. 05			
K70101, ASU No.9 Kosice			
Title: R 43013			
SHEET: 1 OF SHEET: 1			
DRAWING No.: 79319855			

ESSENER HOCHDRUCK-ROHRLEITUNGSBAU
 Original
 ist in rot gestempelt

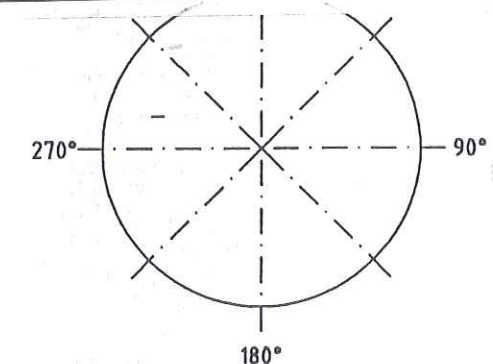


b=VENTILKASTEN 3, Vormontage
valve box 3, pre-fabricating

Lfd Nr.	Benennung	DN (MM)	Sachnummer	Menge	Gewicht (kg)
	<u>Rohr</u>				
1	ROHR 33,4 X 3,4 ALMG4, 5MN W27	25	77038144	7225-NM	6.4
	<u>Flansch</u>				
2	AUSSENMANTELDURCHFÜHRUNG DN 25	25	793.14729	1	2.0
			Summe Masse		8.4

Rohr Stk.	Länge (MM)	DN (MM)	Bemerkung	Rohr Ende 1	Rohr Ende 2	Sachnummer
(1)	32	25				77038144
(2)	138	25	PLD BEND(1)			77038144
(3)	105	25				77038144
(4)	87	25	PLD BEND(1)			77038144
(5)	1162	25				77038144
(6)	105	25	PLD BEND(1)			77038144
(7)	271	25				77038144
(8)	105	25	PLD BEND(1)			77038144
(9)	366	25				77038144
(10)	105	25	PLD BEND(1)			77038144
(11)	1304	25				77038144
(12)	105	25	PLD BEND(1)			77038144
(13)	485	25				77038144
(14)	99	25	PLD BEND(1)			77038144
(15)	526	25				77038144
(16)	99	25	PLD BEND(1)			77038144
(17)	465	25				77038144
(18)	105	25	PLD BEND(1)			77038144
(19)	371	25				77038144
(20)	105	25	PLD BEND(1)			77038144
(21)	368	25				77038144
(22)	105	25	PLD BEND(1)			77038144
(23)	374	25				77038144
(24)	99	25	PLD BEND(1)			77038144
(25)	139	25				77038144

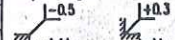
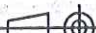
MATERIAL KONTR.		
CECK OF MAT.		
SCHWEISSEN	EHR 74	Damsch A.
WELDING		
MECHAN. FERTIGST.		
MECHAN. COMPL.		
DRUCKPROBE	19 SUPPORT, PHM	Wander
PRESSURE TEST		
EHR-PROJ.-NO.:	C-13005	 AIR LIQUIDE
	ESSENER HOCHDRUCK- ROHRL EITUNGSSAL GMBH	Air Liquide AGS GmbH



ESSENER HOCHDRUCK- ROHRLEITUNGSBAU

AS BUILT

Rohr DN (MM)	25
CL Länge (MM)	7296

E D C B A	MATERIAL : HANAU_AL			All components cleaned for oxygen	
	Workpiece edges 		SCALE	TOLERANCES : DIN 28005 DIN 6570 DIN 7168 mital	
	ISO- Methode E 		DATE : 08.07.2005	Similar: _____ MASS kg Subst.: _____ Replaced: _____	
	1	Rev. No.	Date	By	NAME : H.Schneider CECH : Frickhöfer 08/07/05
This drawing is not to be reproduced, copied or used directly or indirectly in any way detrimental to our interests unless specifically authorized in writing by					
JOB CODE / REFERENCE :			1 1. 7. 05		
K70101, ASU No.9 Kosice					
Title :			DRAWING No. : f 2		
Air Liquide AGS GmbH Hanau			79319870		
AL 43011			C		